



# LEGISLATIVE **HEALTH POLICY** ORIENTATION

## Session Two

- ◆ **The Private Insurance Market in Kansas**
- ◆ **Ready or Not? How the Public Health System in Kansas Works**

**January 7, 2021  
9:00 - 10:30 AM CST**



**KANSAS HEALTH INSTITUTE**

*Informing Policy. Improving Health.*



KANSAS HEALTH INSTITUTE

*Informing Policy. Improving Health.*

# Ready or Not? How the Public Health System in Kansas Works



**Charles Hunt, M.P.H. – Senior Analyst**

---

*Kansas Health Institute*

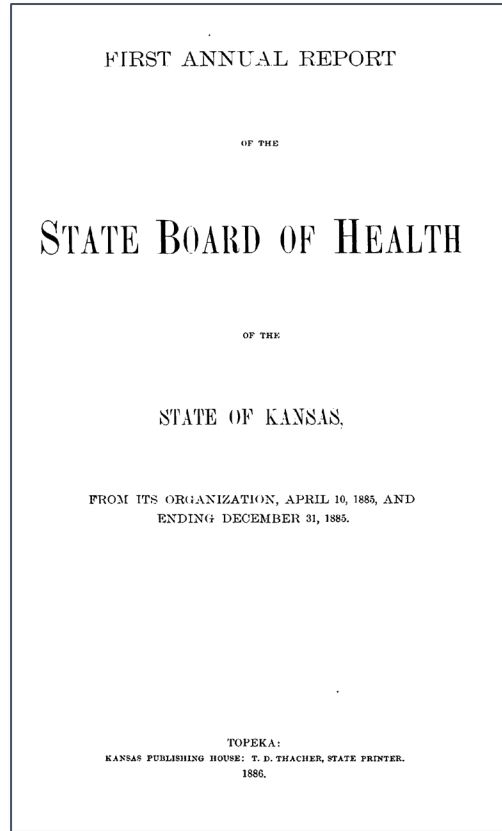
# AGENDA

- Historical context
- Foundation of community health
- Kansas public health system
- Essential public health services

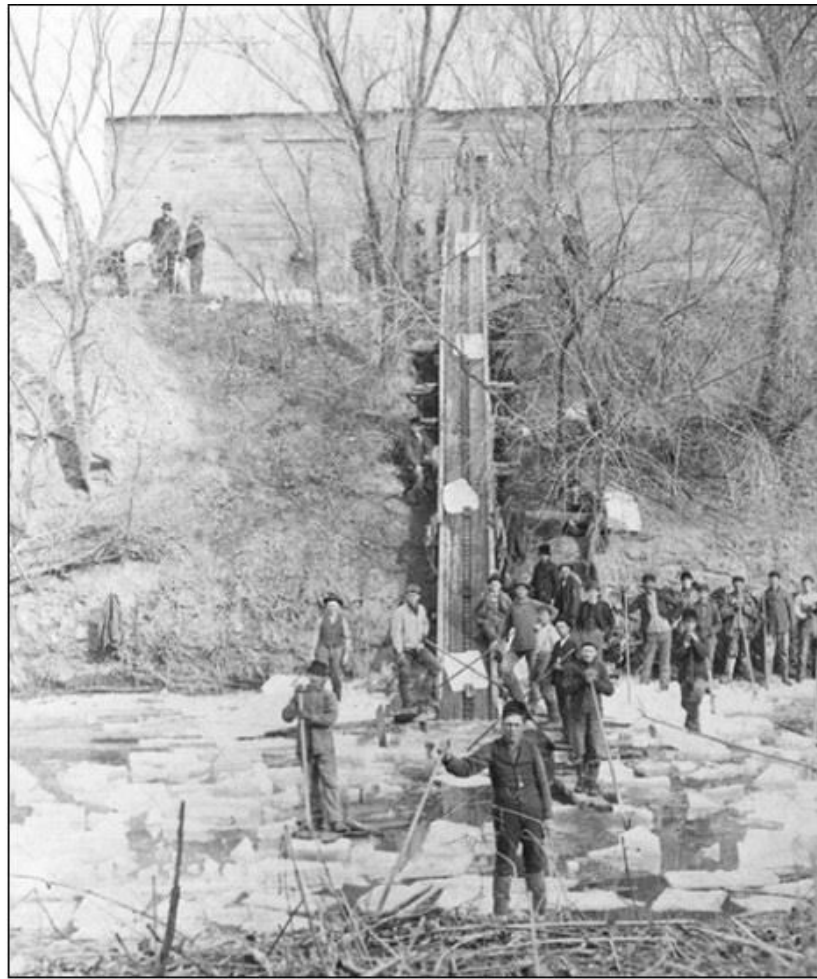
1.

# HISTORICAL CONTEXT





*Sources: Kansas State Historical Society (BOH Report);  
Library of Congress (Map)*



*Source: Kansas State Historical Society*

**NOTHING  
IS SO  
GOOD  
FOR  
CHILDREN  
SUFFERING FROM  
Cold in Head  
SNUFFLES  
OR  
CATARRH HAY-FEVER**



A particle is applied into each nostril and is agreeable. Price 50 cents at druggists; by mail, registered, 60 cents. ELY BROTHERS, 36 Warren St., New York.

**SCOTT'S  
EMULSION**

**OF PURE COD LIVER OIL  
And Hypophosphites of Lime & Soda**

**Almost as Palatable as Milk.**

The only preparation of COD LIVER OIL, that can be taken readily and tolerated for a long time by delicate stomachs.

**AND AS A REMEDY FOR CONSUMPTION, SCROFULOUS AFFECTIONS, ANAEMIA, GENERAL DEBILITY, COUGHS AND THROAT AFFECTIONS, and all WASTING DISORDERS OF CHILDREN It is marvellous in its results.**

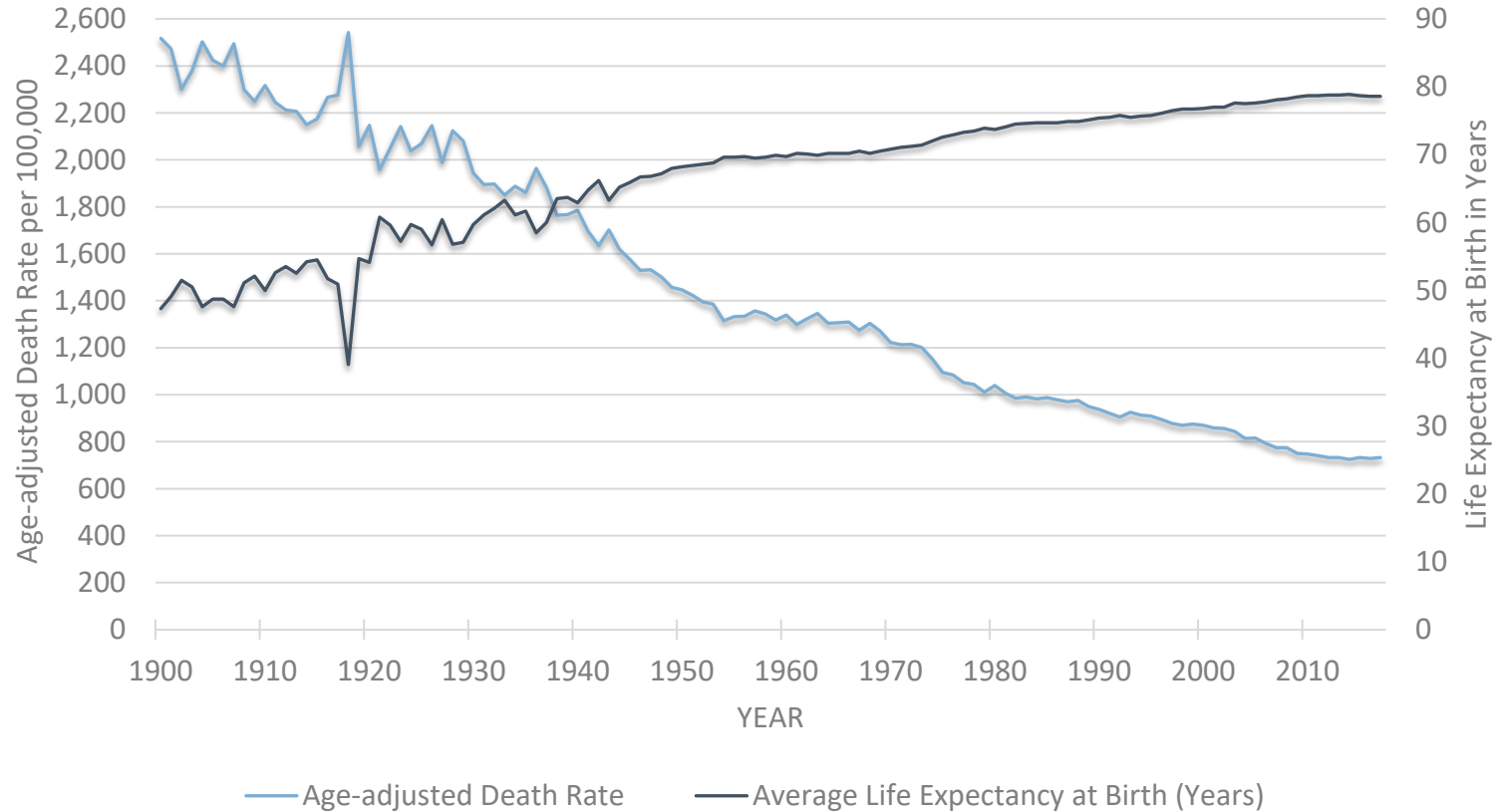
Prescribed and endorsed by the best Physicians in the countries of the world.

For Sale by all Druggists.  
Send for Pamphlet on Wasting Diseases. Address, SCOTT & BOWNE, New York.

*(The Elk City Eagle, June 18, 1889)*

*Source: Kansas State Library*

# Age-adjusted Death Rate and Life Expectancy at Birth, United States, 1900-2017



Source: CDC/NCHS: National Vital Statistics System.



# POP QUIZ!

How much of the 30-year gain in life expectancy between 1900 and 1999 is attributable to public health measures?

1. 5-9 years
2. 10-14 years
3. 15-19 years
4. 20-29 years
5. All 30!

# POP QUIZ!

How much of the 30-year gain in life expectancy between 1900 and 1999 is attributable to public health measures?

**Correct Answer: 25!**

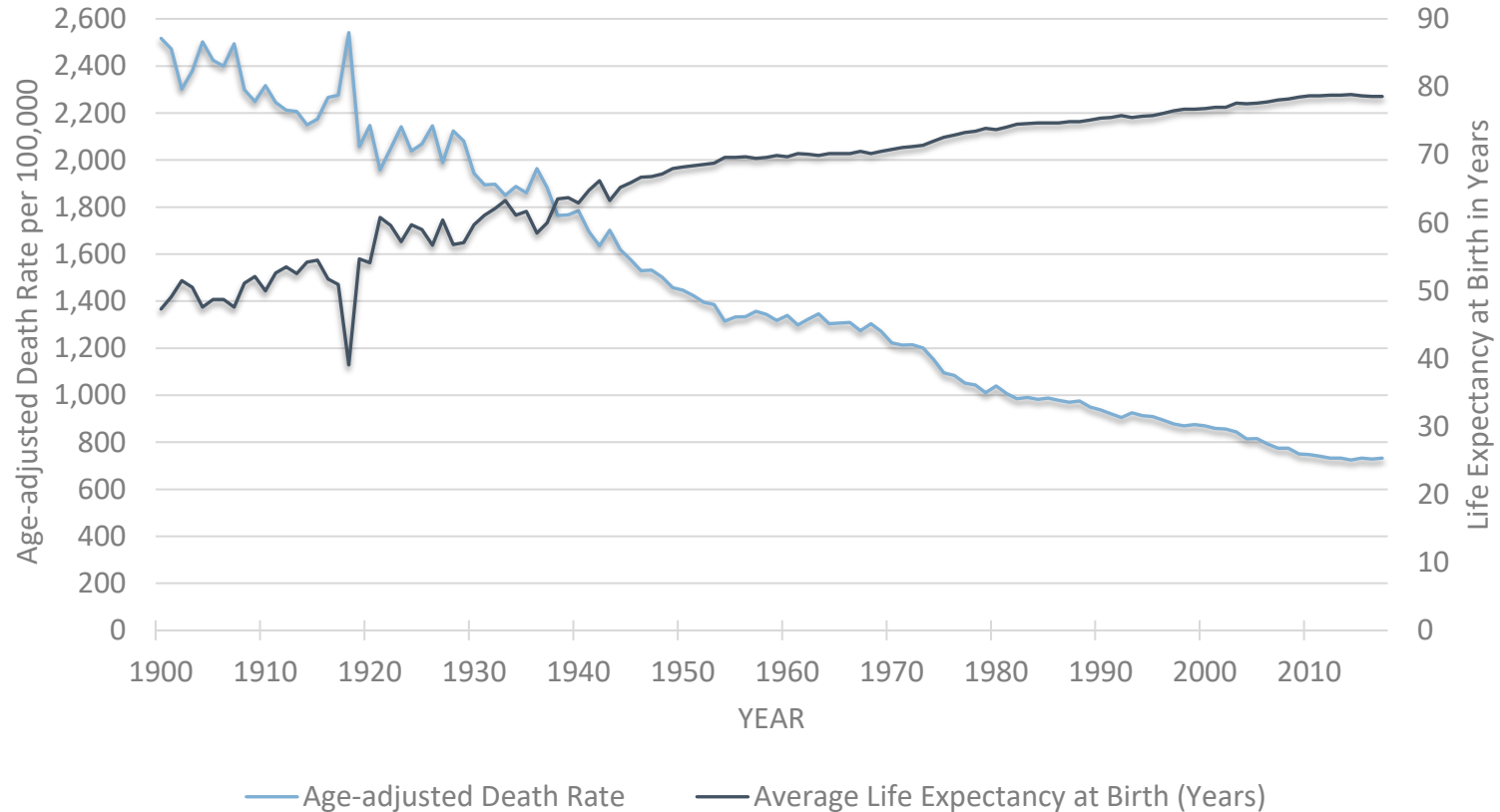
# 10 GREAT PUBLIC HEALTH ACHIEVEMENTS (1900-1999)

1. Vaccination
2. Motor-vehicle safety
3. Safer workplaces
4. Control of infectious diseases
5. Decline in deaths from coronary heart disease and stroke
6. Safer and healthier foods
7. Healthier mothers and babies
8. Family planning
9. Fluoridation of drinking water
10. Recognition of tobacco use as a health hazard

**2.**

# **FOUNDATION OF COMMUNITY HEALTH**

# Age-adjusted Death Rate and Life Expectancy at Birth, United States, 1900-2017



Source: CDC/NCHS: National Vital Statistics System.

From late January to early October 2020, the U.S. had 299,000 more deaths than the typical number during the same period in previous years (excess deaths)

At least  
**2 out of 3**  
of these excess deaths were  
from COVID-19

The largest percentage increases were among people who were **Hispanic or Latino** and **adults aged 25–44**

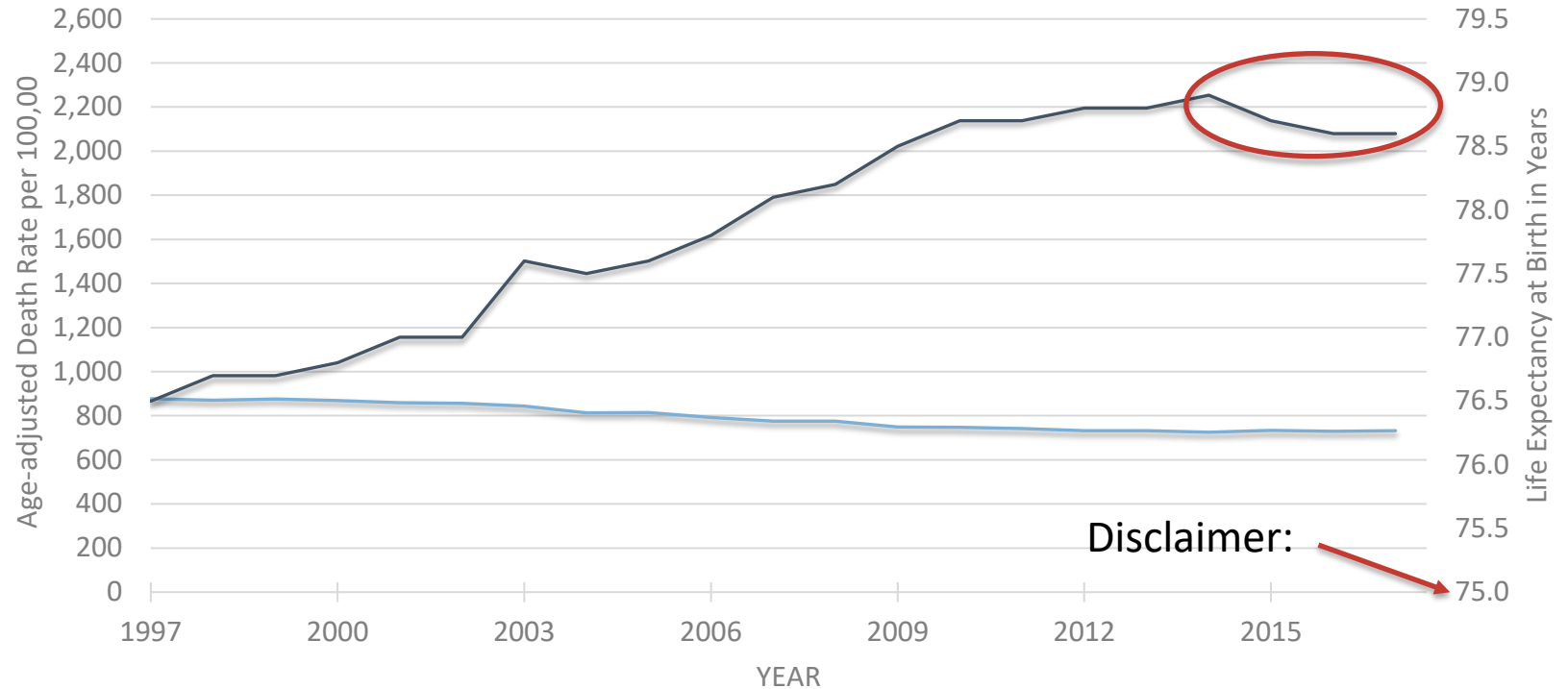
CDC.GOV

[bit.ly/MMWR102020](https://bit.ly/MMWR102020)

MMWR

*Source: Centers for Disease Control and Prevention, 2020*

# Age-adjusted Death Rate and Life Expectancy at Birth, United States, 1997-2017

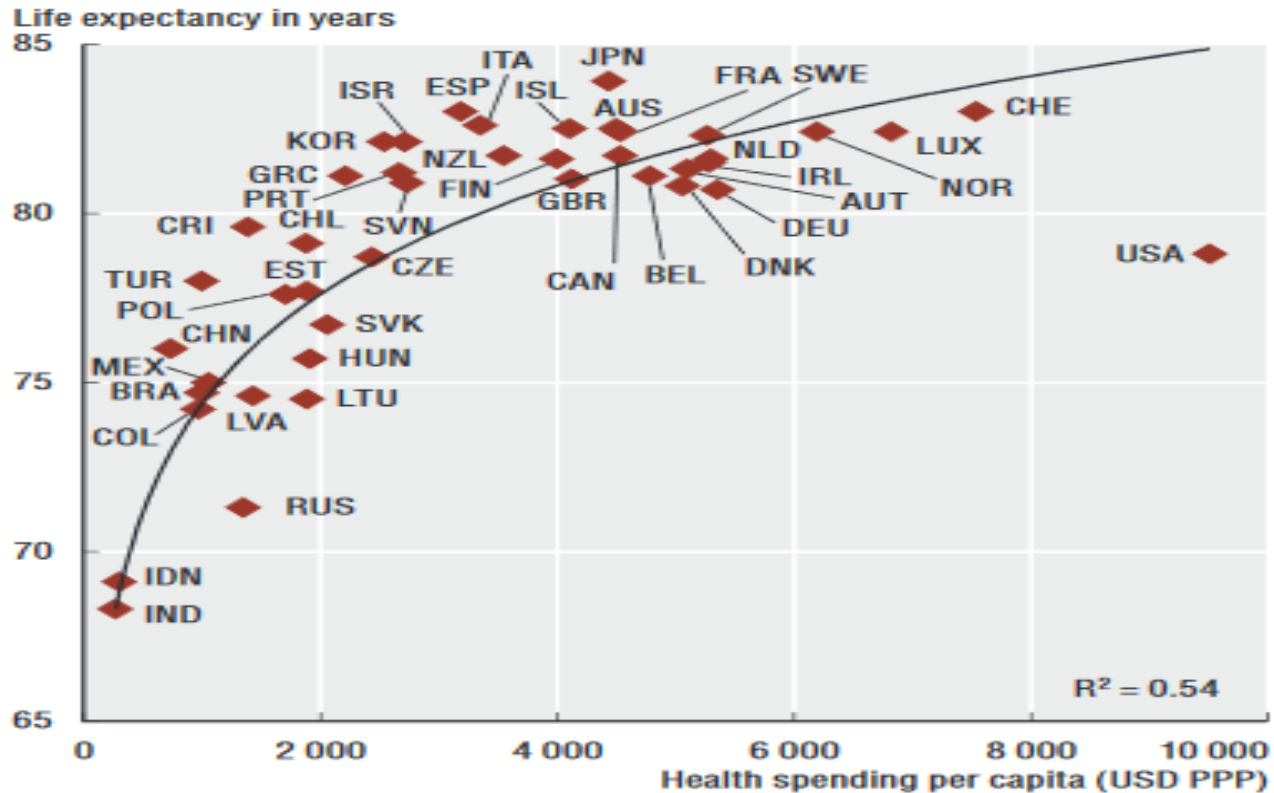


Disclaimer:

— Age-adjusted Death Rate — Average Life Expectancy at Birth (Years)

Source: CDC/NCHS: National Vital Statistics System.

# Life expectancy at Birth and Health Spending per Capita, 2015 (or nearest year)



Source: OECD Health Statistics, 2017.



Physical environment



Access to healthy food

Stress



**HEALTH**



Smoking

Pollution



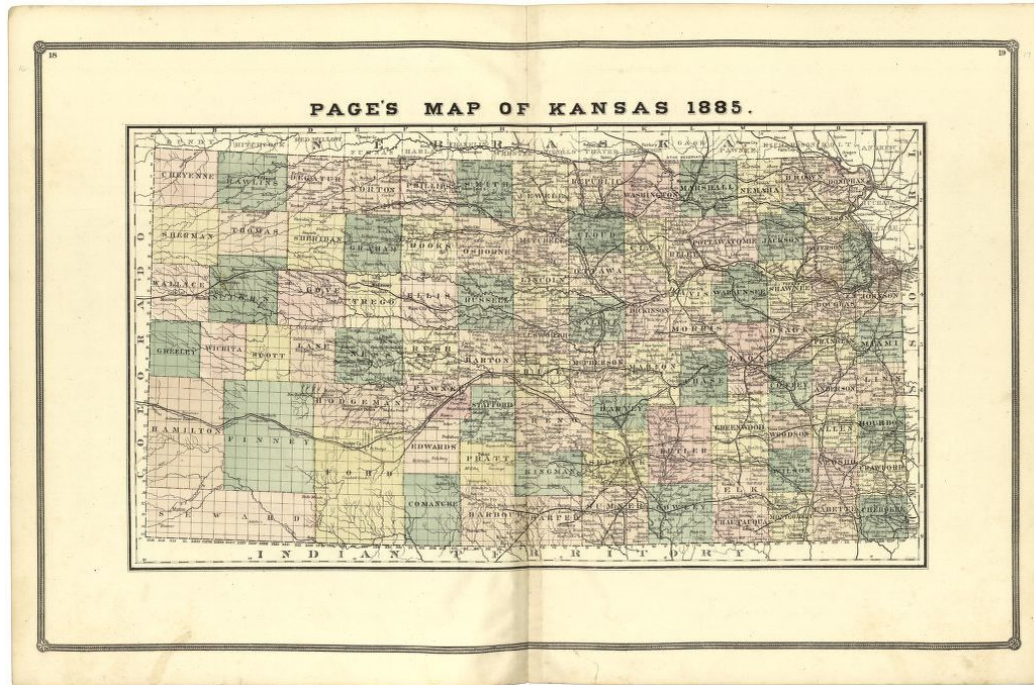
Housing



**3.**

# **KANSAS PUBLIC HEALTH SYSTEM**

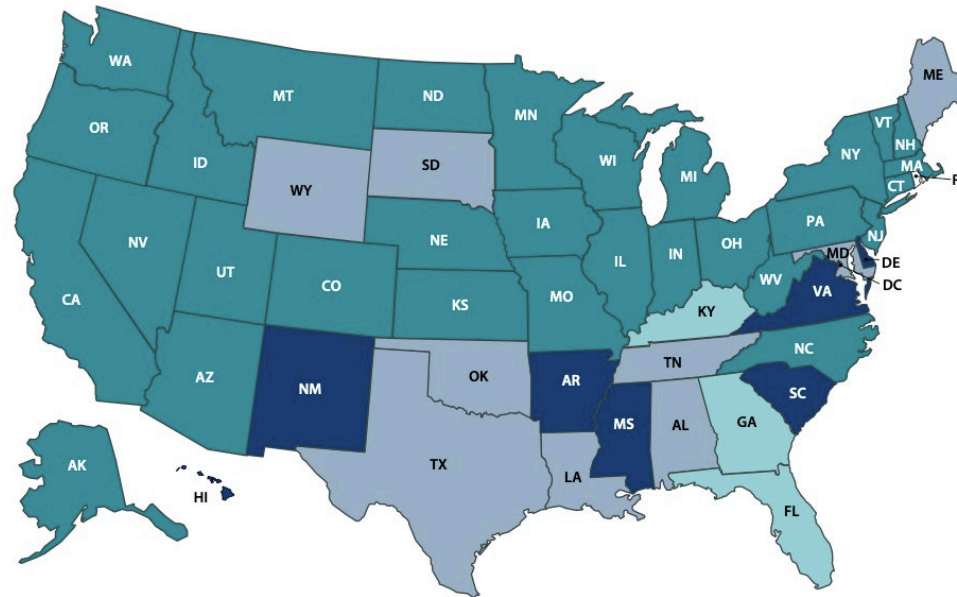
# KANSAS PUBLIC HEALTH SYSTEM



- KDHE
- 100 local health departments
  - 2 multi-county departments

# TYPE OF LOCAL HEALTH DEPARTMENT GOVERNANCE, BY STATE, 2019

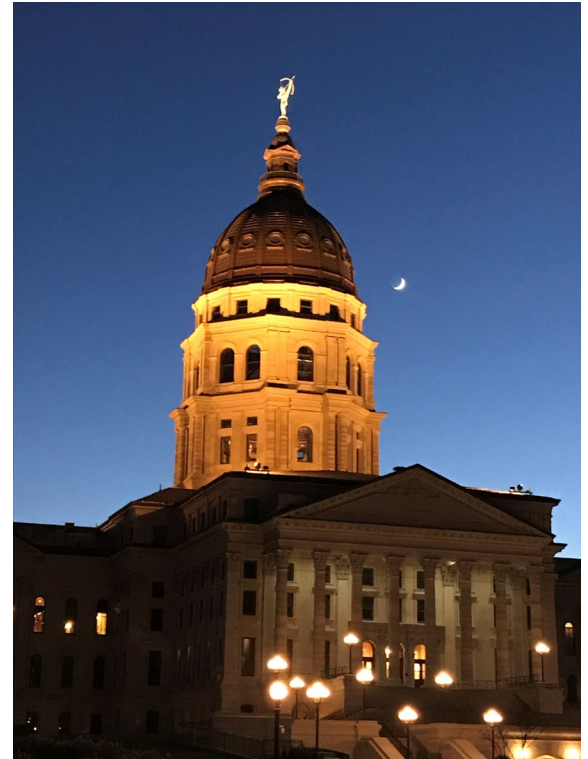
- Local (all LHDs in state are units of local government)
- State (all LHDs in state are units of state government)
- Shared (all LHDs in state governed by both state and local authorities)
- Mixed (LHDs in state have more than one governance type)



RI was excluded from the study  
N=2,459

# STATUTES RE: GOVERNANCE AND RESPONSIBILITIES

- K.S.A. Ch. 65
  - KDHE: Article 1
  - Local: Article 2

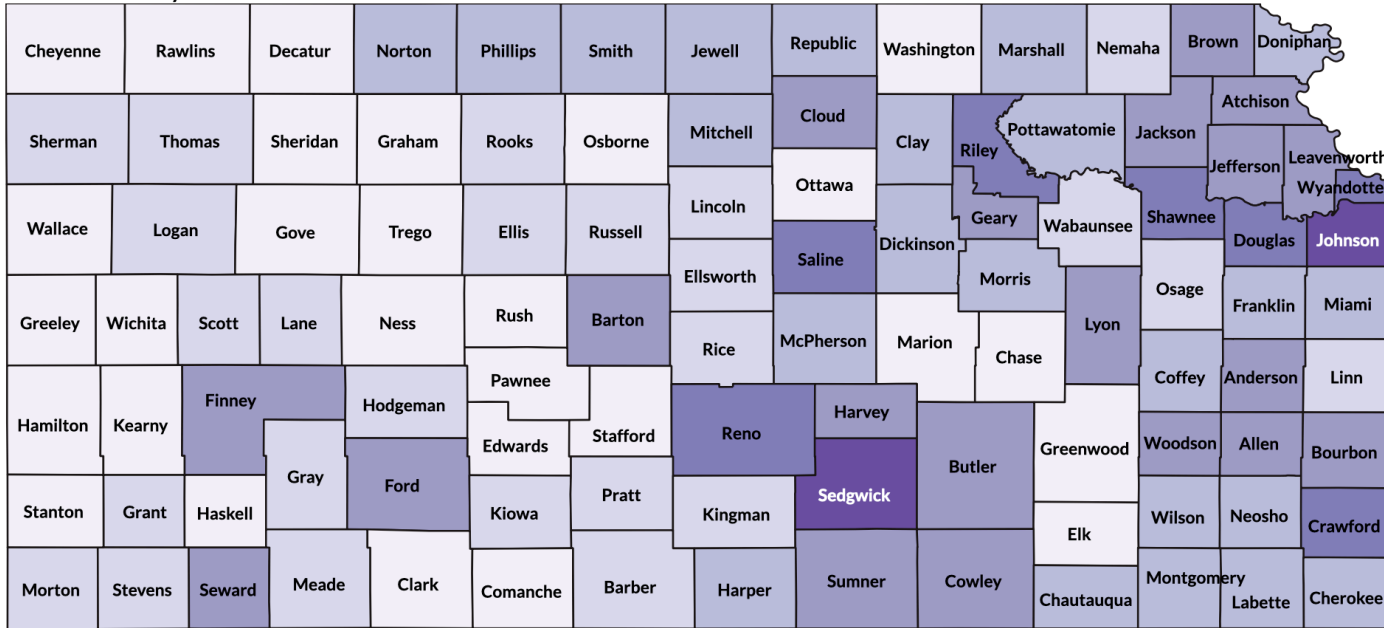


# LOCAL HEALTH OFFICER

## (K.S.A. 65-201 ET SEQ.)

- 100,000+ population
  - Physician
  - Preference for training in public health
- <100,000 population
  - Qualified local health program administrator
  - Medical consultant (physician or dentist)

# WORKFORCE: FTE



Number of FTE: 0-3.9 4-5.9 6-10.9 11-25.9 26-79.9 80-145

Multi-County Health Departments NEK: Atchison, Brown, Jackson SEK: Allen, Anderson, Bourbon, Woodson

Source: Kansas Public Health Collaborative (Wichita State University) analysis of KDHE Aid-to-Local Survey, FY2021



# SERVICES

Public Health in Action Kansas Public Health Workforce Resources Events About Contact Us

## Explore Kansas Public Health Department Maps

Selected Service: Blood Lead Testing

VIEW MAP BY SERVICES

- A - C
- Blood Lead Testing**
- Breastfeeding Support
- Car Seats
- Case Management
- Childcare Provider Licensing
- Chronic Disease Management
- Chronic Disease Prevention
- D - F
- G - K
- L - P
- Q - Z

Click on county to see additional information.

Cheyenne	Rawlins	Decatur	Norton	Phillips	Smith	Jewel	Republic	Washington	Marshall	Nemaha	Brown	Doniphan
Sherman	Thomas	Sheridan	Graham	Rooks	Osborne	Mitchell	Cloud	Clay	Riley	Pottawatomie	Jackson	Atchison
Wallace	Logan	Gove	Trego	Ellis	Russell	Lincoln	Ottawa	Geary	Wabaunsee	Shawnee	Douglas	Johnson
Greeley	Wichita	Scott	Lane	Ness	Rush	Barton	Ellsworth	Saline	Dickinson	Morris	Osage	Franklin
Hamilton	Kearny	Finney	Hodgeman	Pawnee	Stafford	Reno	Harvey	Rice	McPherson	Marion	Chase	Lyon
Stanton	Grant	Haskell	Gray	Ford	Kiowa	Pratt	Kingman	Sedgwick	Butler	Greenwood	Woodson	Allen
Morton	Stevens	Seward	Meade	Clark	Comanche	Barber	Harper	Sumner	Cowley	Elk	Wilson	Neosho
										Chautauqua	Montgomery	Labette
												Cherokee

Multi-County Health Departments NEK: Atchison, Brown, Jackson SEK: Allen, Anderson, Bourbon, Woodson

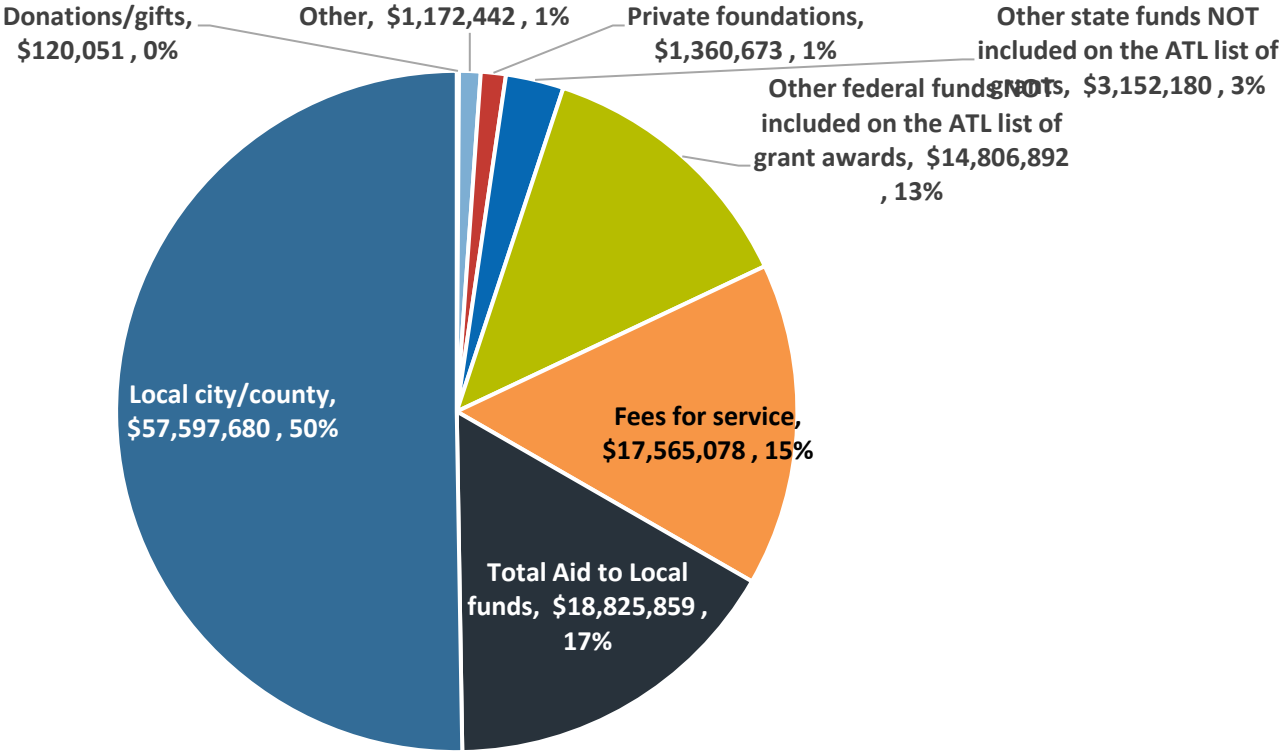
Information displayed represents data as reported by health departments through the annual State Formula Survey (also referred to as the Aid-to-Local Survey). The majority of health departments (94 out of 100) entered their data between 01/15/2020 and 3/16/2020. Due to the impacts of COVID-19, 6 health departments requested submission deadline extensions and entered their data between 04/01/2020 and 05/05/2020. If you have questions about the data presented here, please contact Sarah Jolley, [Sarah.Jolley@wichita.edu](mailto:Sarah.Jolley@wichita.edu).

Accessibility Menu





# LOCAL PUBLIC HEALTH FUNDING, BY SOURCE, SFY2019



Source: Kansas Association of Local Health Departments analysis of KDHE Aid-to-Local survey, SFY2021



# FEDERAL FUNDING FOR LOCAL PUBLIC HEALTH

- Public Health Emergency Preparedness
- Maternal Child Health program
- Special Supplemental Nutrition Program for Women, Infants, and Children (WIC) program
- Vaccines for Children program
- 2020: COVID-19
  - Coronavirus Supplemental Funding
  - Coronavirus Relief Fund (CRF)
  - Epidemiology and Lab Capacity (ELC)

# STATE FUNDING



- State Formula (K.S.A. 65-242)
  - Minimum \$7,000/LHD (since 1992)
    - 2/3 of LHDs get this amount
    - Temporarily raised to \$12,000 via proviso for SFY 2021
  - Any additional amount allocated via population
  - Total allocation: \$2.22 million since 1992
    - SFY 2021 budget included a \$900,000 increase (via allotment)
- Some other state funding to local governments does exist (e.g., teen pregnancy, immunizations)

# LOCAL FUNDING

- Primary source: property tax
- Some counties allocate part of a sales tax to public health
- City funding via tax support does come into play for those city-county departments (Lawrence-Douglas, City-Cowley)
- While local support remains the largest source of public health funding in Kansas, the tax lid has complicated expanding on this source for those counties that would be interested otherwise

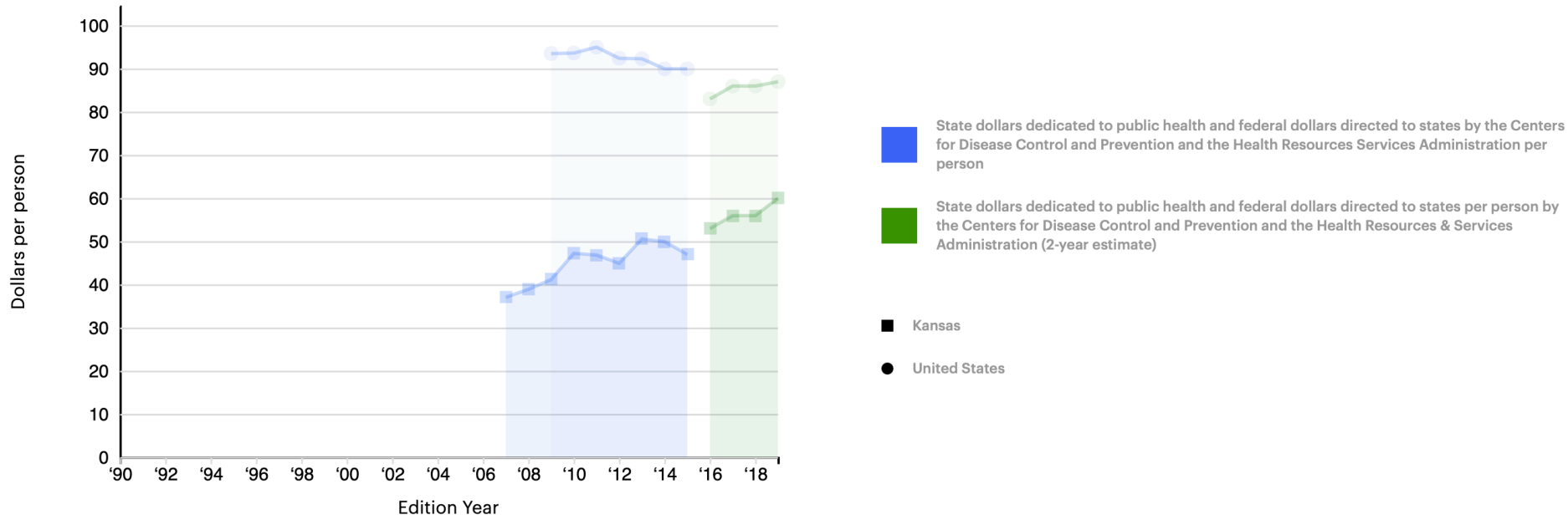


# FEE FOR SERVICE

- Medicaid
- Private insurance
- Direct out-of-pocket



# KANSAS RANKS 40<sup>TH</sup> IN PER CAPITA PUBLIC HEALTH FUNDING



US: \$87 / KS: \$60

**4.**

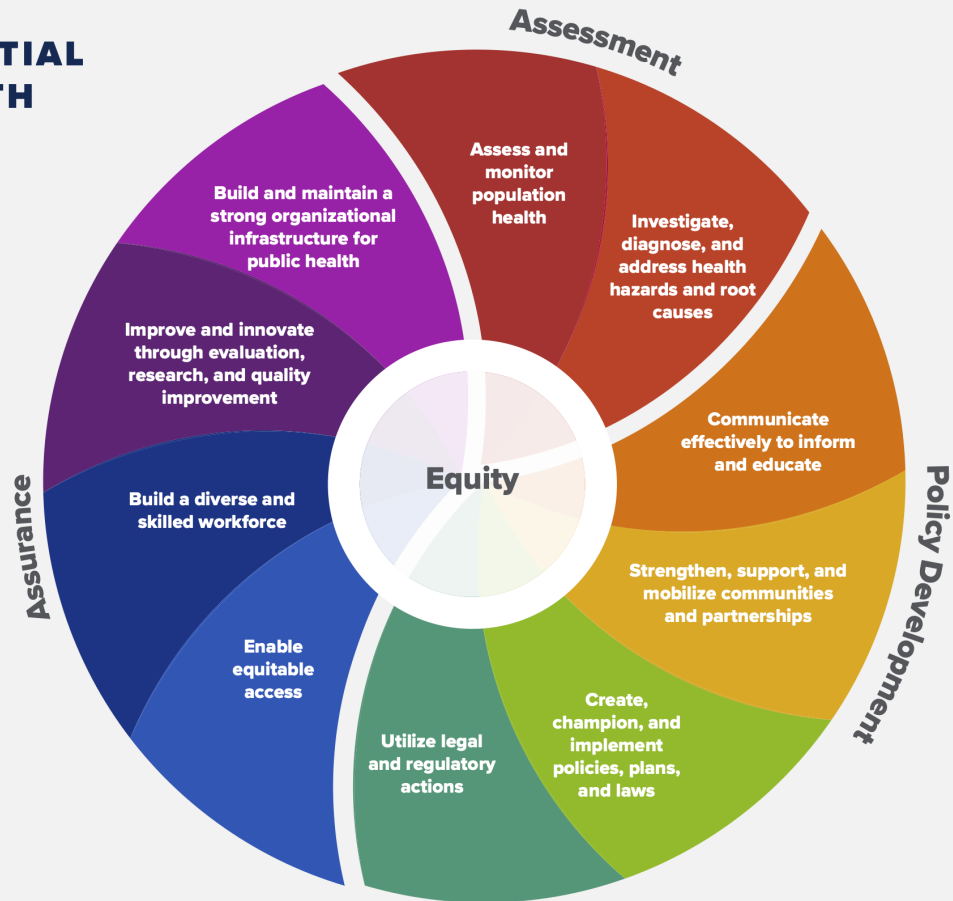
# **ESSENTIAL PUBLIC HEALTH SERVICES**



# THE 10 ESSENTIAL PUBLIC HEALTH SERVICES

*To protect and promote the health of all people in all communities*

The 10 Essential Public Health Services provide a framework for public health to protect and promote the health of all people in all communities. To achieve optimal health for all, the Essential Public Health Services actively promote policies, systems, and services that enable good health and seek to remove obstacles and systemic and structural barriers, such as poverty, racism, gender discrimination, and other forms of oppression, that have resulted in health inequities. Everyone should have a fair and just opportunity to achieve good health and well-being.



Created 2020

# PUBLIC HEALTH



**Diagnose**



**Cooperate**



**Prevent**

*Source: de Beaumont Foundation, 2020*



KANSAS HEALTH INSTITUTE

*Informing Policy. Improving Health.*

**THANK YOU**  
**Any questions?**

You can connect with me at: [chunt@khi.org](mailto:chunt@khi.org)



KANSAS HEALTH INSTITUTE

*Informing Policy. Improving Health.*

---

# CONNECT WITH US!



khi.org



/KHIorg



@KHIorg

---